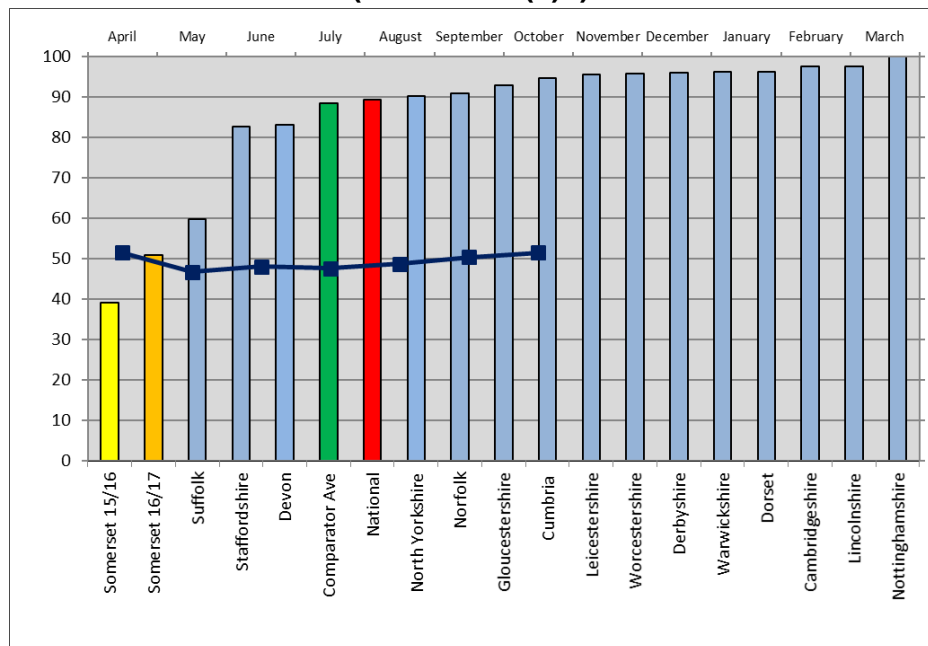


Scrutiny Report – Adult Social Care Performance: Appendix A

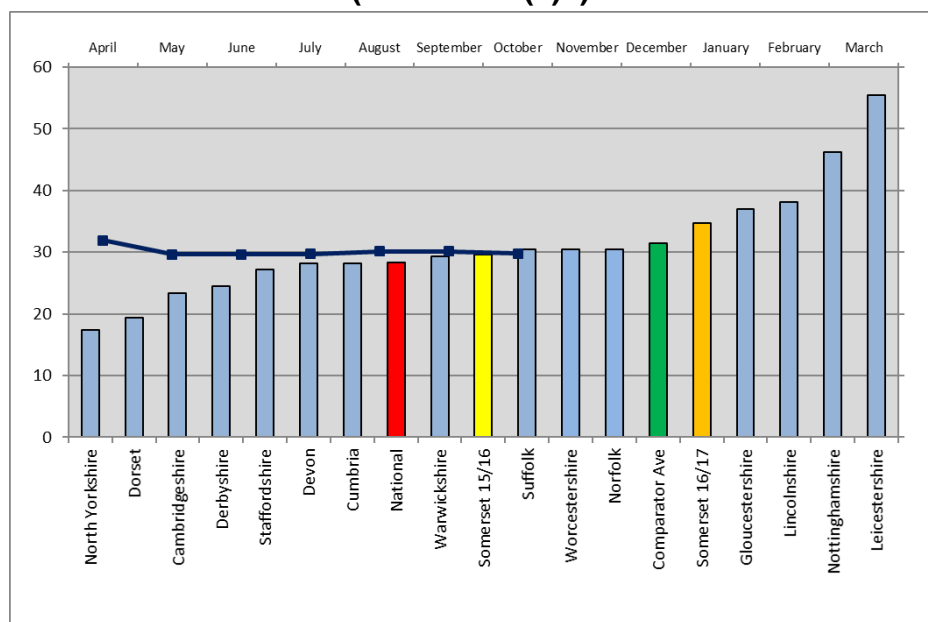
Tables A to F below show the 2015/16 (yellow bar) and 2016/17 (orange bar) outturn performance measures from ASCOF for Somerset and the 2016/17 outturn for Somerset’s family group (blue bars). The red bar shows the national average for 2016/17 and the green bar shows the average for our family group. The line shows Somerset’s performance to date in 2017/18 (using the top axis).

A. Proportion of people using social care who receive self-directed support (ASCOF 1C(1)a):



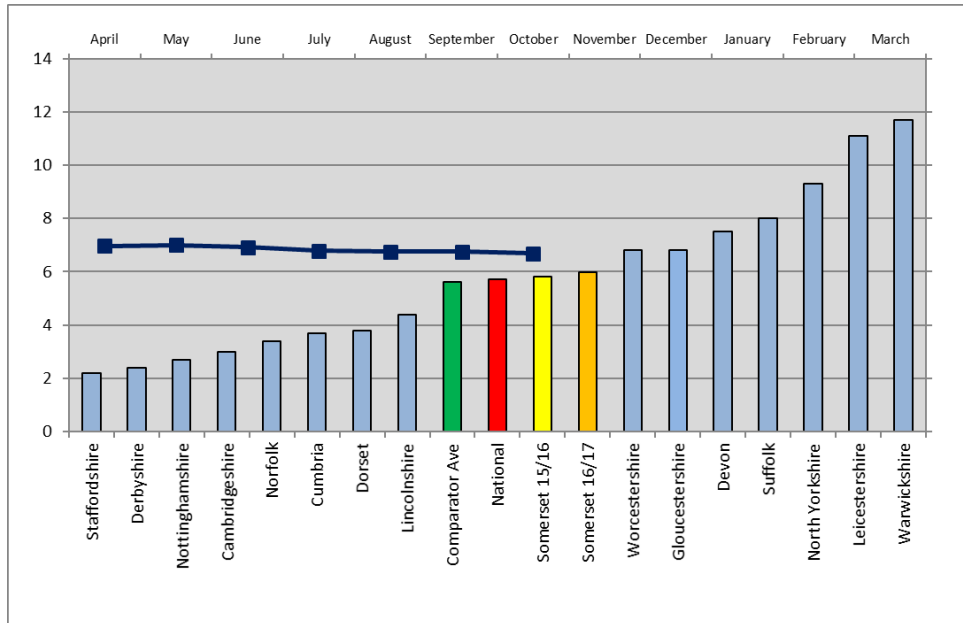
Commentary: Higher is better. Somerset’s performance against this measure is poor and is significantly below both the national and comparator group average.

B. Proportion of people using social care who receive direct payments (ASCOF 1C(2)a):



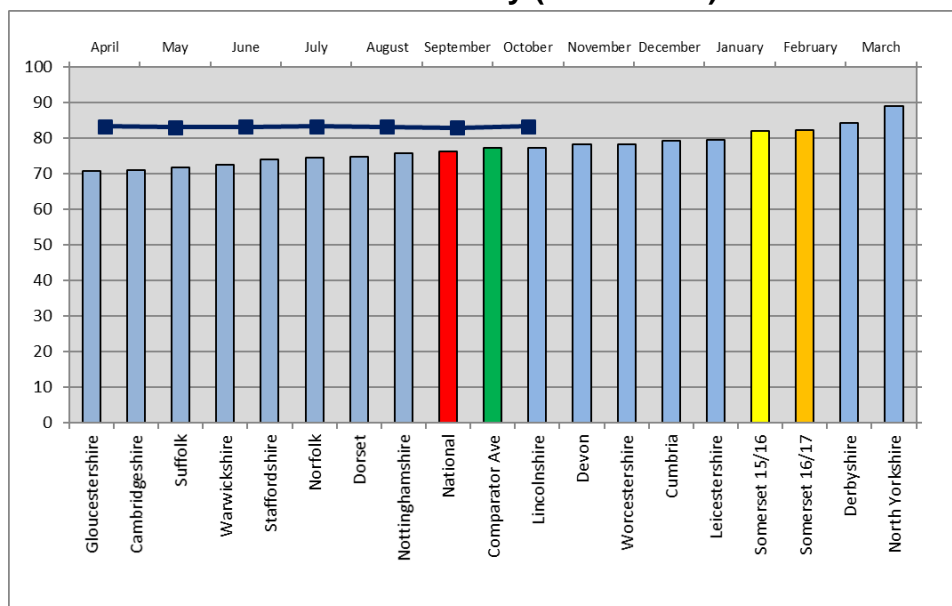
Commentary: Higher is better. Somerset's performance is good. It is above both the national average and the comparator group average. 2016/17 performance was an improvement on performance in 2015/16.

C. Proportion of adults with learning disabilities in paid employment (ASCOF 1E):



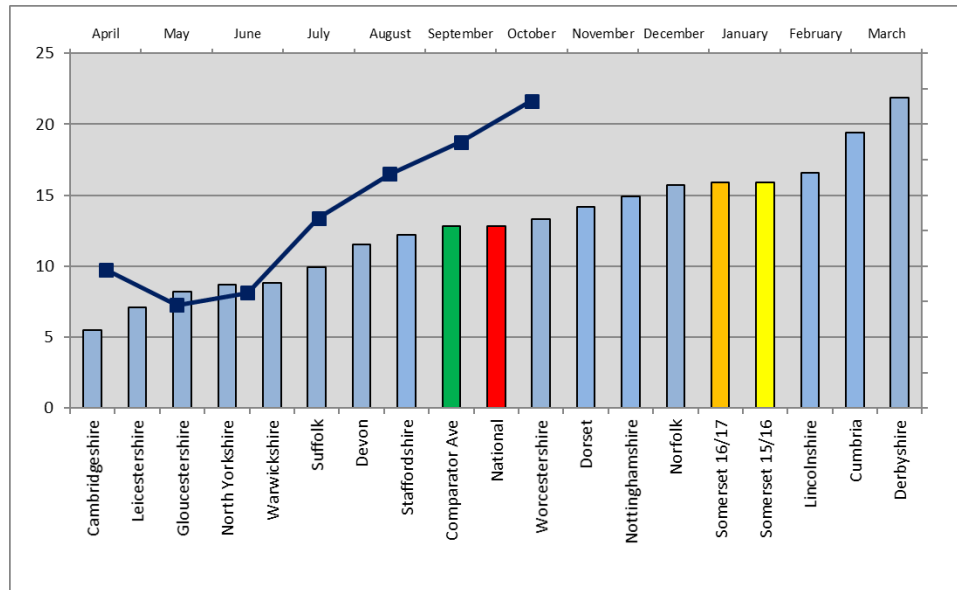
Commentary: Higher is better. Somerset's performance is slightly above both the national average and the average for the comparator group. 2017/18 performance shows further improvement.

D. Proportion of adults with learning disabilities who live in their own home or with their family (ASCOF 1G):



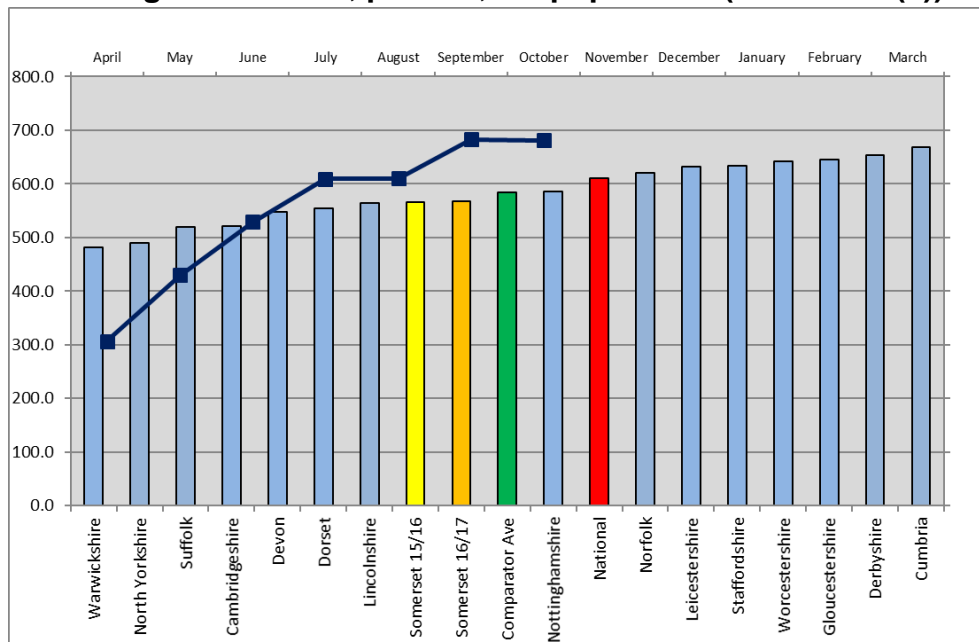
Commentary: Higher is better. Somerset's performance is good and is above both the national and comparator group averages.

E. Permanent admissions of younger adults (aged 18 to 64) to residential and nursing care homes, per 100,000 population (ASCOF 2A(1)):



Commentary: Lower is better. Somerset's performance in 2015/16 was poor. Placement numbers were above the national and comparator group averages and Somerset was one of the highest placing councils in the comparator group. Performance in 2016/17 was in line with 2015/16 performance.

F. Permanent admissions of older people (aged 65+) to residential and nursing care homes, per 100,000 population (ASCOF 2A(2)):



Commentary: Lower is better. Somerset's performance in 2015/16 was better than the national and comparator group averages. Performance in 2016/17 showed a very slight deterioration compared to 2015/16. The forecast outturn for 2017/18 shows a further deterioration in performance.